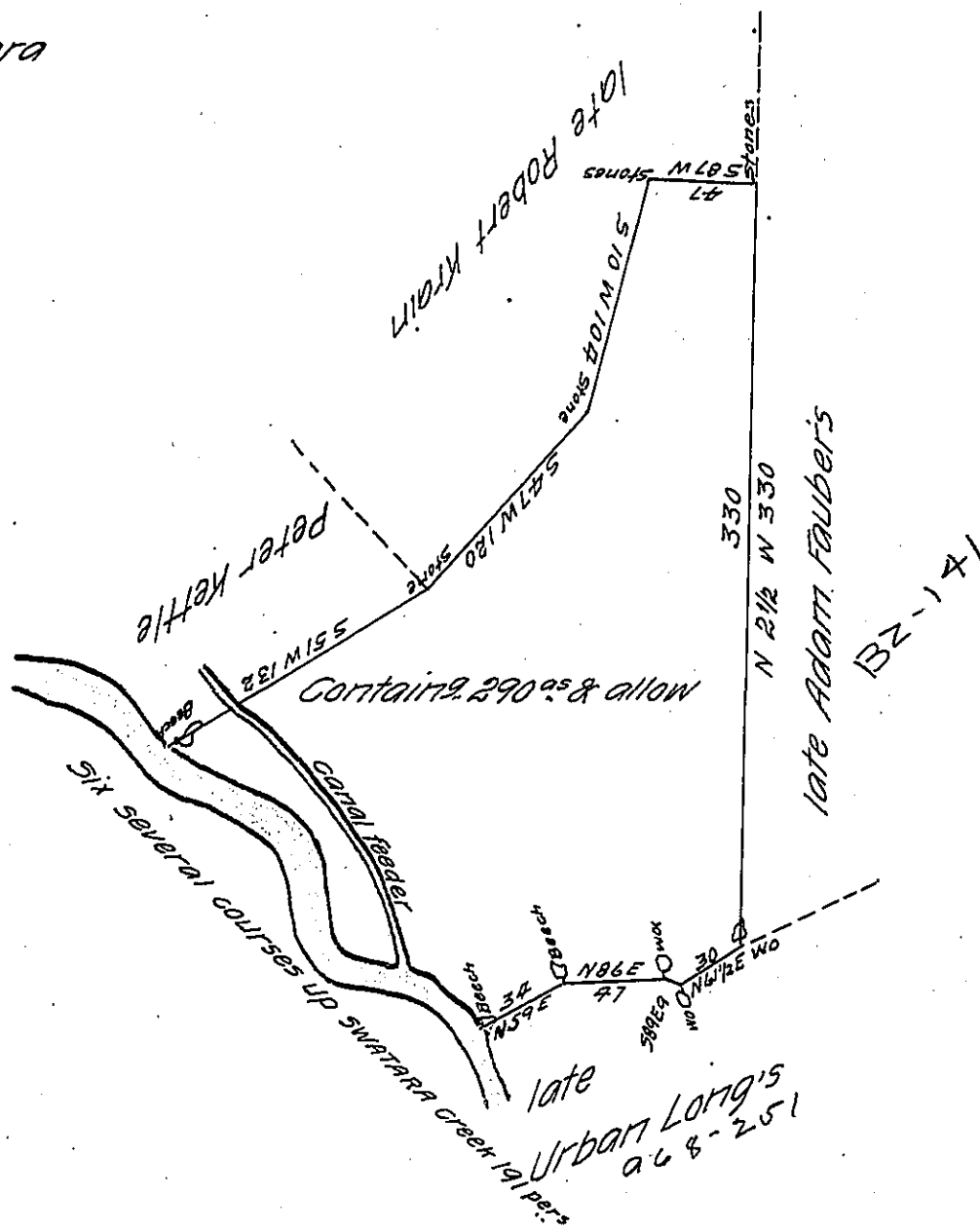


FORM NO 1.

The following six several courses along Swatara Creek to wit

- No 1 S 73 E 25 Post
- 2 S 52 1/2 E 40 Post
- 3 S 43 E 48 Post
- 4 S 53 1/2 E 26 Post
- 5 S 88 E 26 Post
- 6 S 62 E 26 Post
191 Pers



The above described tract of land situate in Swatara township Lebanon County containing two hundred & ninety acres & the usual allowance &c. it being the same tract of land which was surveyed to John Spittler by his warrant dated the 6th day of April A.D. 1754 surveyed the 2nd day of May 1836 to Gabriel Long & others

To Jacob Spangler Esq.
Surveyor Genl.

Tob^s Kreider D.S.

IN TESTIMONY that the above is a copy of the original remaining on file in the Department of Internal Affairs of Pennsylvania, made conformably to an Act of Assembly approved the 16th day of February, 1833, I have hereunto set my Hand and caused the Seal of said Department to be affixed at Harrisburg, this seventh day of March 1907

Isaac D. Brown
Secretary of Internal Affairs.